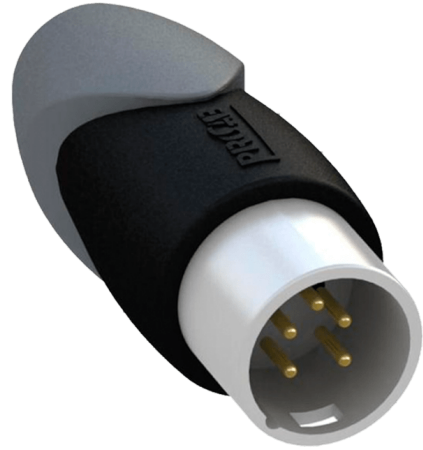


CLP158

110 ohm DMX terminator - 5 pin male XLR

Product information:

The CLP158 is a 110 Ohm DMX terminator, featuring a 5-pin XLR connector. A DMX terminator should be plugged in into the last connected device in the DMX chain, preventing reflections causing data transmission errors on the DMX databus.



Properties:



Product Features:

Application	null
	null
Series	null
	null